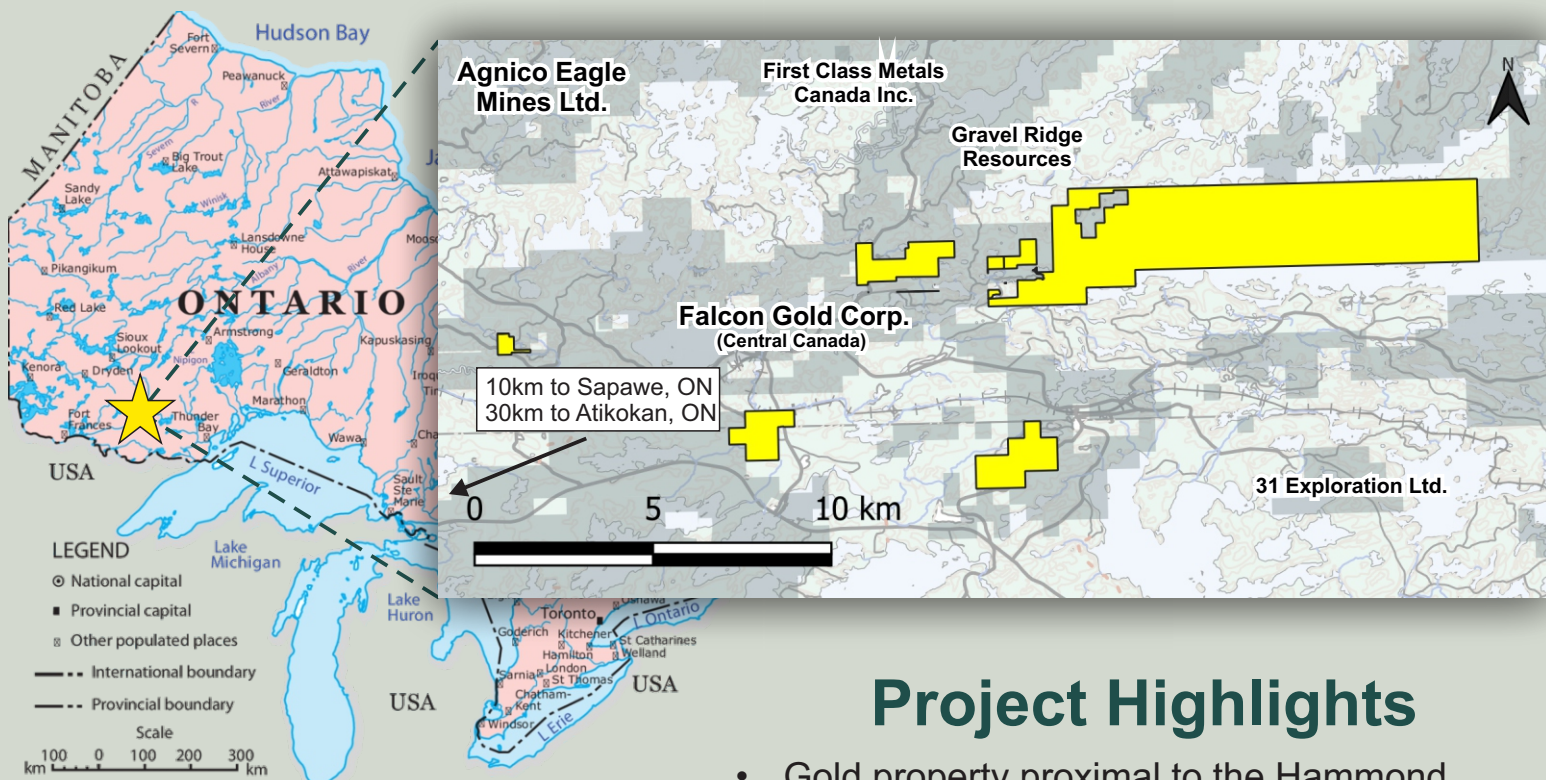


Sapawe Au Project

Northwestern Ontario



FLYROCK



Project Highlights

- Active work permit submitted/approved in 2025 over majority of property.
- Assessment report currently processing for UAV LiDAR performed in 2025.
- Several OMI occurrences and historical AMIS sites throughout the area.
 - Historical drilling on Eagle prospect along strike identified east-west gold-bearing zone which returned 1.8g/t Au over 7.6m.
 - Historical Sapawe Mine (along strike) has unclassified resource (pre NI 43-101) of 528,614T @ 0.31opt.
- Gold property proximal to the Hammond Reef deposit, consisting of 184 unpatented mining claims over 5 claim packages, totaling 3,650ha.
- Easily accessible off Highway 623/Sapawe Upsala Rd.
- UAV LiDAR work performed in 2025; outlined possible dikes/splays off Quetico fault which typically host mineralization.

