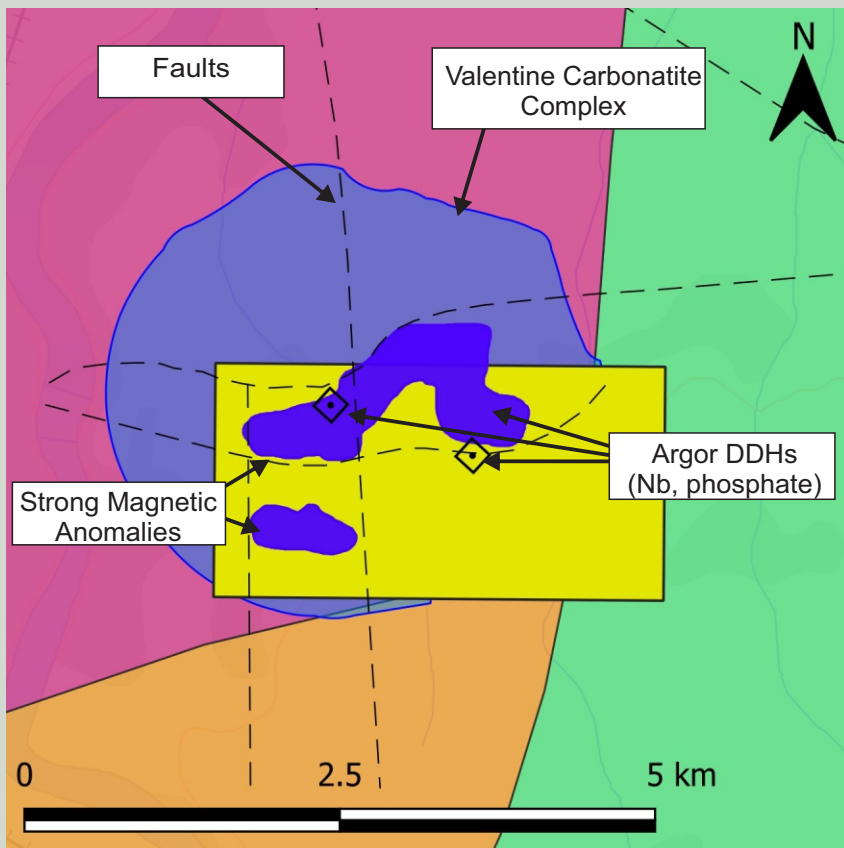
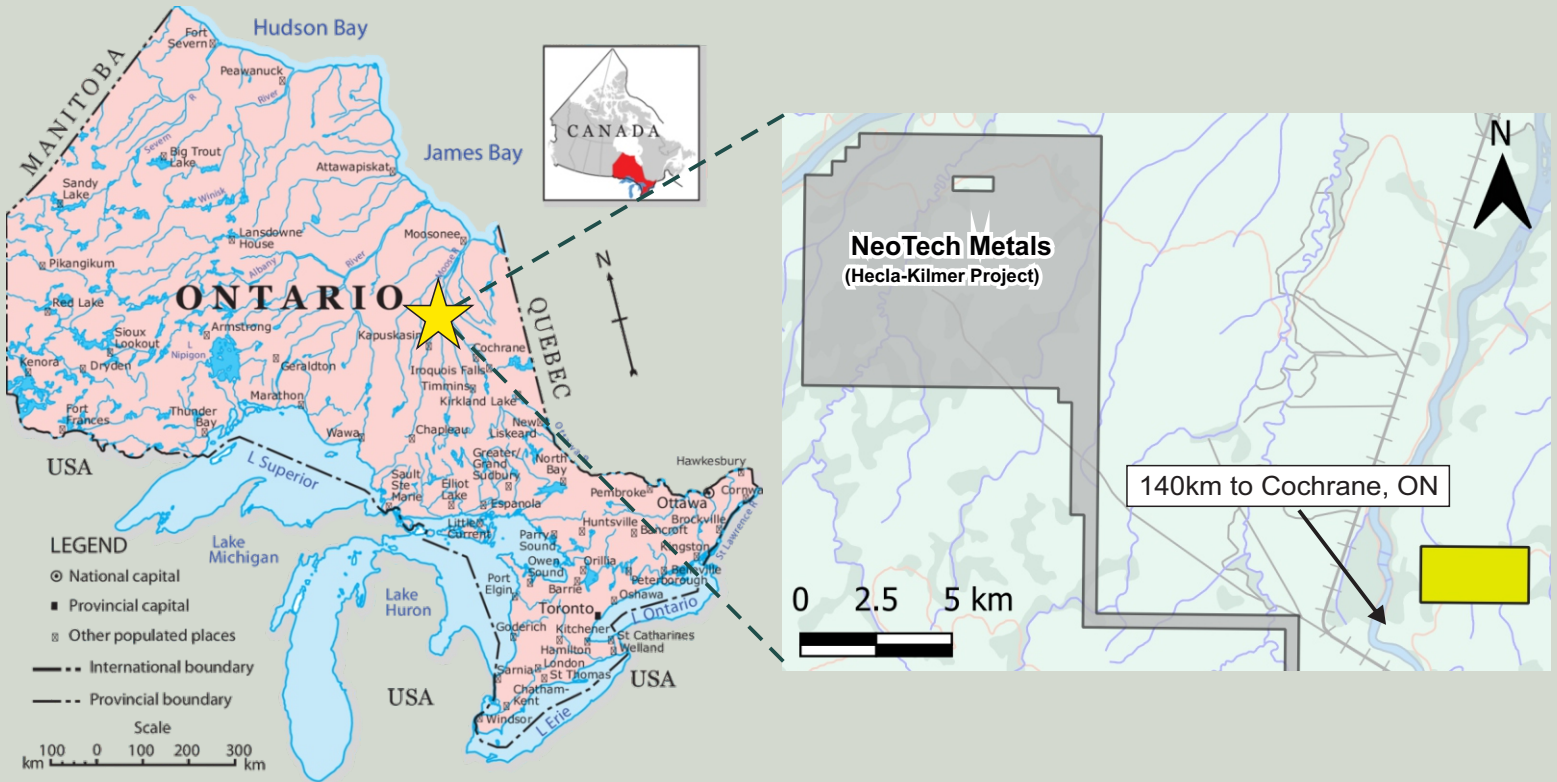


Valentine Nb-REE Project

Northeastern Ontario



FLYROCK



Project Highlights

- Early exploration stage Nb-REE project consisting of 32 unpatented mining claims, totaling 660 ha, situated on the Valentine Carbonatite Complex.
- Last drilled by Argor Expl. Ltd. in 1969; best intercept was 3m of 0.08% Nb₂O₅.
- Nb and phosphate mineralization as disseminated pyrochlore and apatite.
- Highly magnetic, zoned, and fault-bounded anomaly of ferrocarnatite intrusion on the Property, prospective for Nb-REE.
- 12 km SE of NeoTech Metal's Hecla-Kilmer Project (Nb-PGE), hosted in a similar carbonatite intrusion.